

***ANANDA***

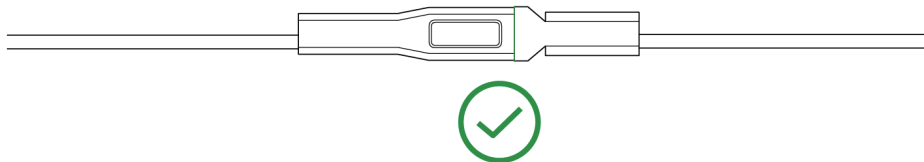
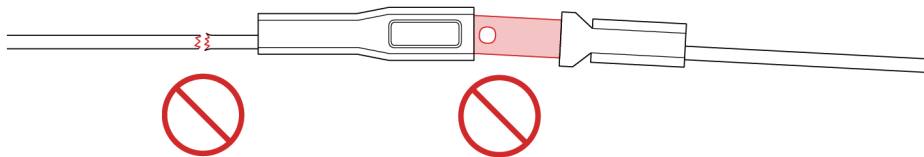
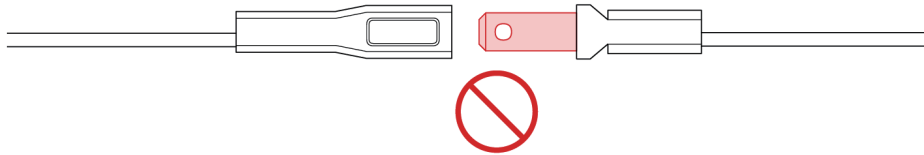
# Help Manual

## Headlight

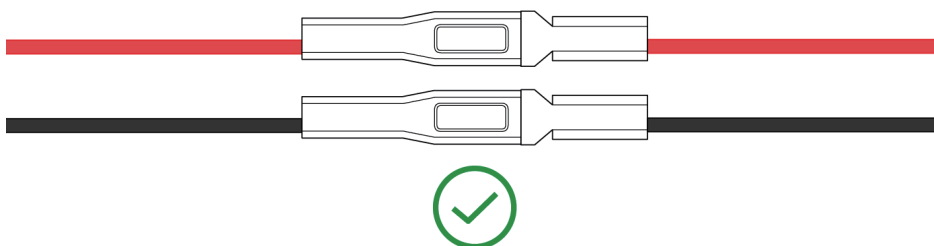
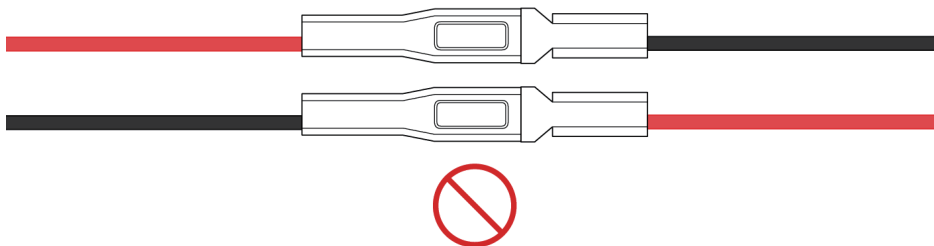
The content of this information is subject to change without notice

1. Check the headlight terminals for loosening or disconnection or reversal, or the harness for damage and open circuit.

①



②



2. If the harness is connected correctly, replace the headlight.
3. If the problem is still not resolved after the headlight is replaced, replace the midmotor.